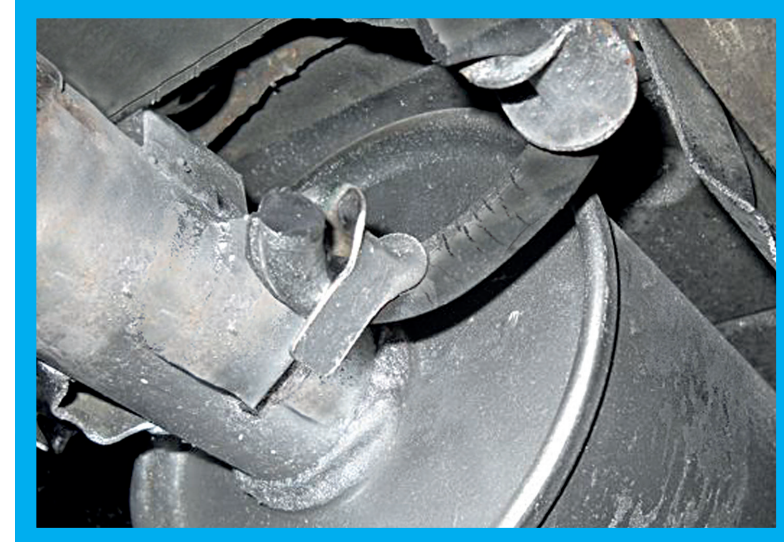
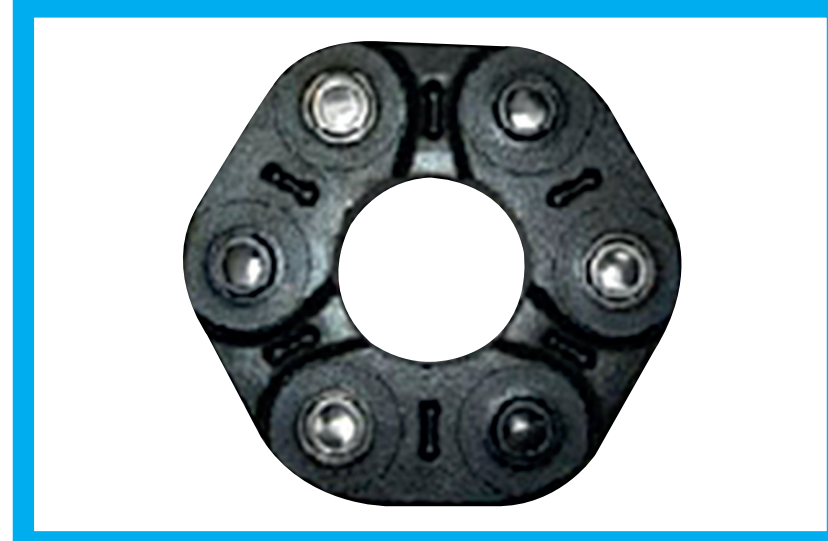


## PIPE & RUBBER HANGER DEFECTS



Worn-out or broken rubber hangers produce a perfectly round cut, around the welded joint where the pipe connects to the silencer housing. This is a common failure where the silencer has been replaced using the old rubber hangers.

## WORN ENGINE MOUNTINGS & FLEXIBLE DRIVE SHAFT JOINT DEFECTS



Worn-out or broken engine mountings or flexible drive shaft joints produce a typical irregularly shaped fracture which destroys the pipe a few centimetres behind the connection to the silencer.

## WALKER® MANUFACTURING QUALITY

**1,5 mm Aluminised steel 120g/m<sup>2</sup> Outer Covers**

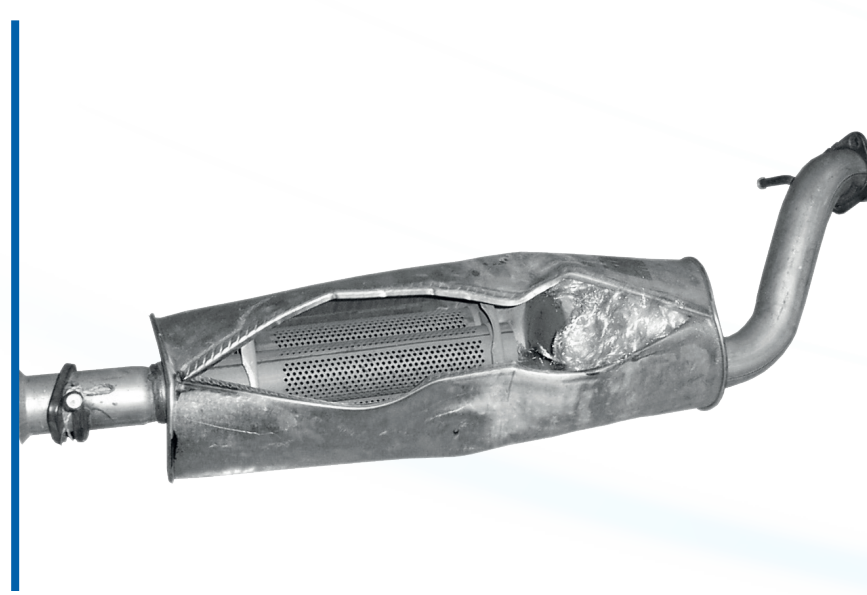
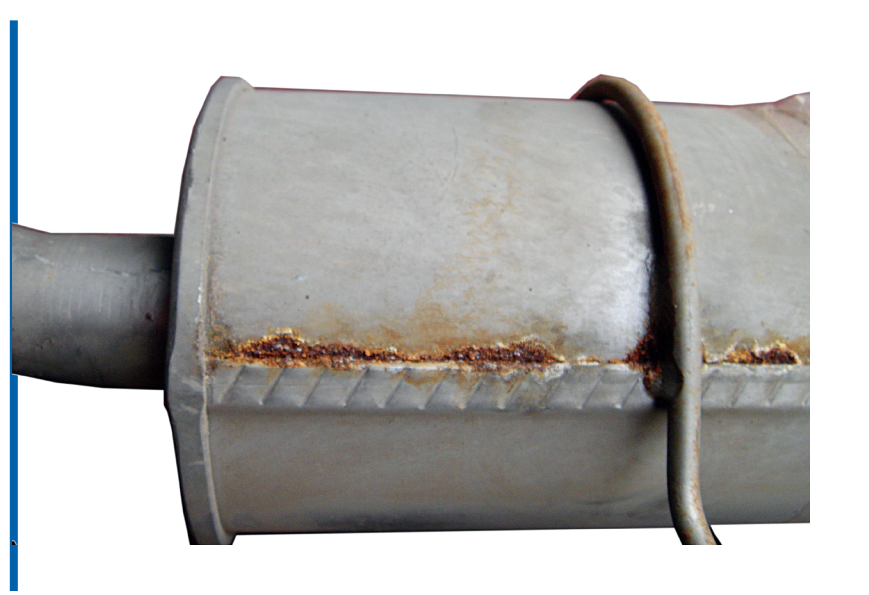
**0,7 mm Aluminised steel 120g/m<sup>2</sup> external housing**

**1,5 mm to 2mm thickness Aluminised steel 120g/m<sup>2</sup> Pipes**

**Inside leaf made of 0,5 mm thickness Aluminised steel 120 g/m<sup>2</sup>**

**WARRANTY 24 MONTHS**

## SILENCER HOUSING & COVER DEFECTS



Hermetic seam of the housing is rusted: this only becomes a problem when it generates an air leakage.

Perforated exhaust housing. This failure is common in mono-layer silencers due to the accumulation of water inside.

Silencer housing has exploded due to condensation of unburned fuel (HC) inside the silencer.

## EUROPEAN HOMOLOGATION CODES

**European Homologation code for Catalytic Converters**

$a \geq 8 \text{ mm}$  European Regulation Homologation number

$2a/3$   $a/3$  **(E9)** 103R 001234  $a/3$

**European Homologation code for Silencers**

$a \geq 8 \text{ mm}$   $2a/3$   $a/3$  **e9** 030148

Homologation country	Homologation guideline	Homologation number
*1* Germany	*01* Belgium	Guideline 70/157/EEC N° 00
*2* France	*02* Spain	Guideline 77/212/EEC N° 01
*3* Italy	*11* UK	Guideline 84/424/EEC N° 02
*4* Netherlands	*12* Austria	Guideline 92/97/EEC N° 03
*5* Sweden	*13* Luxembourg	
	*17* Finland	
	*18* Denmark	
	*21* Portugal	
	*23* Greece	
	*16* Ireland	

**Examples of incorrect codes on products**

~~e1 00 0123~~  
Only appears on one line

~~e1 47 0123~~  
First 2 digits are always 00, 01, 02 or 03

~~E1 01 1235~~  
Only lowercase e is valid

~~e1 101235~~  
Number is composed of 2 digits + space + 4 digits

~~e1 103R 031235~~  
Only capital E is valid