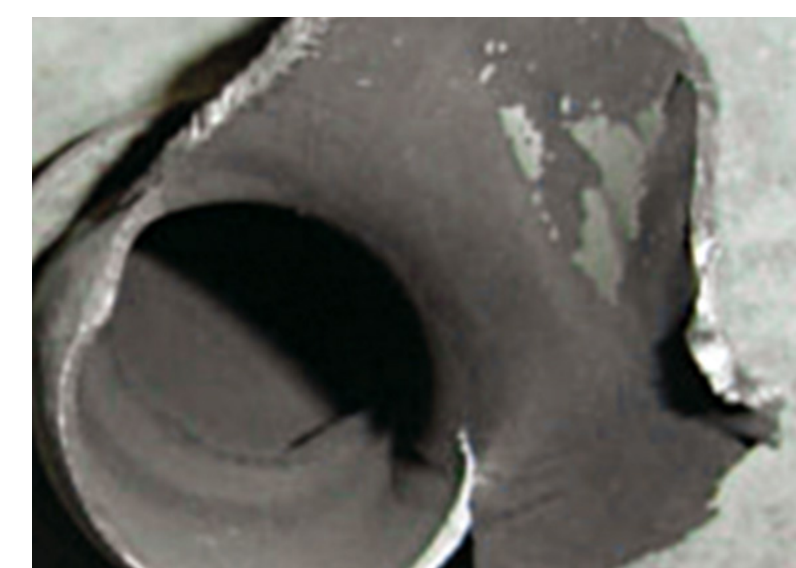
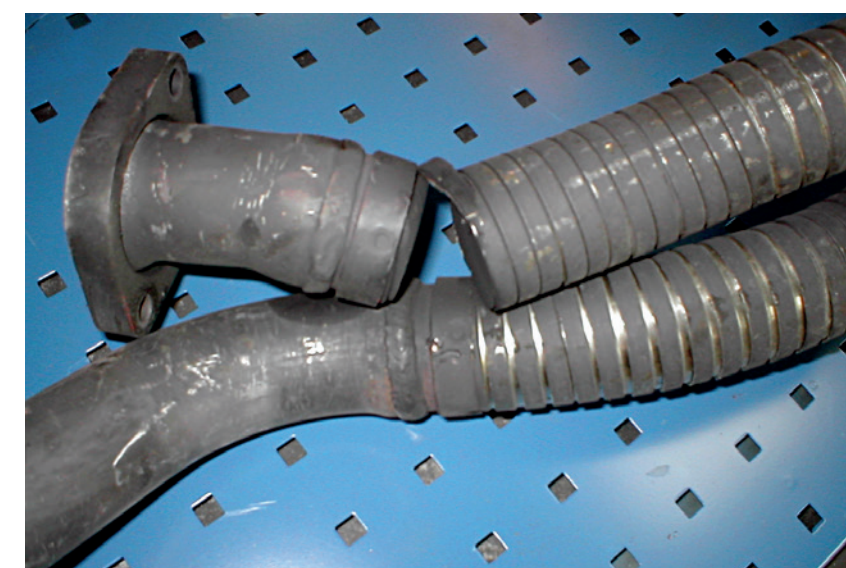


PIPE & RUBBER HANGER DEFECTS



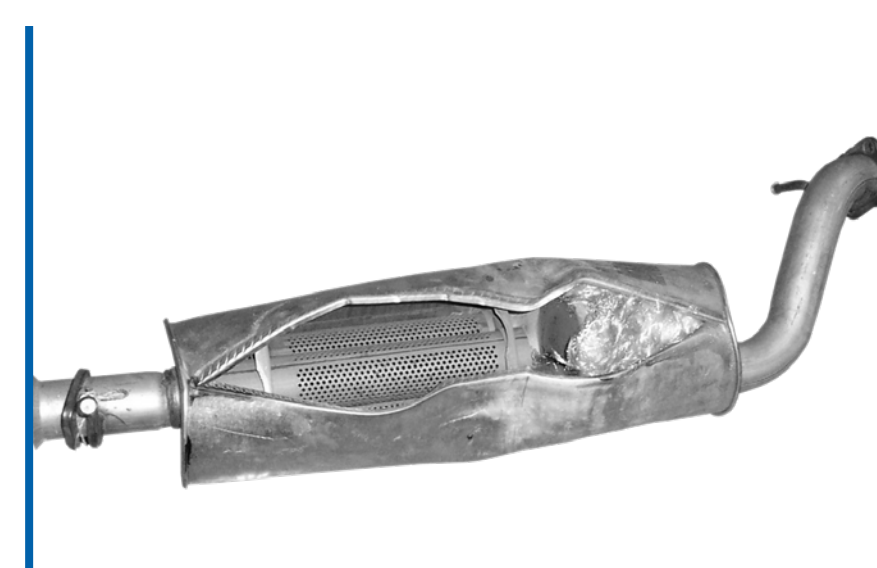
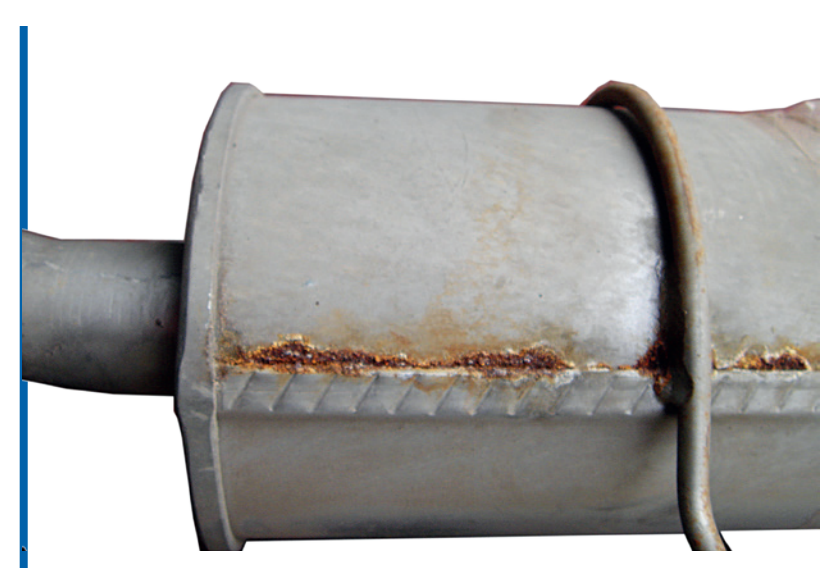
Worn-out or broken rubber hangers produce a perfectly round cut, around the welded joint where the pipe connects to the silencer housing. This is a common failure where the silencer has been replaced using the old rubber hangers.

WORN ENGINE MOUNTINGS & FLEXIBLE DRIVE SHAFT JOINT DEFECTS



Worn-out or broken engine mountings or flexible drive shaft joints produce a typical irregularly shaped fracture which destroys the pipe a few centimetres behind the connection to the silencer.

SILENCER HOUSING & COVER DEFECTS

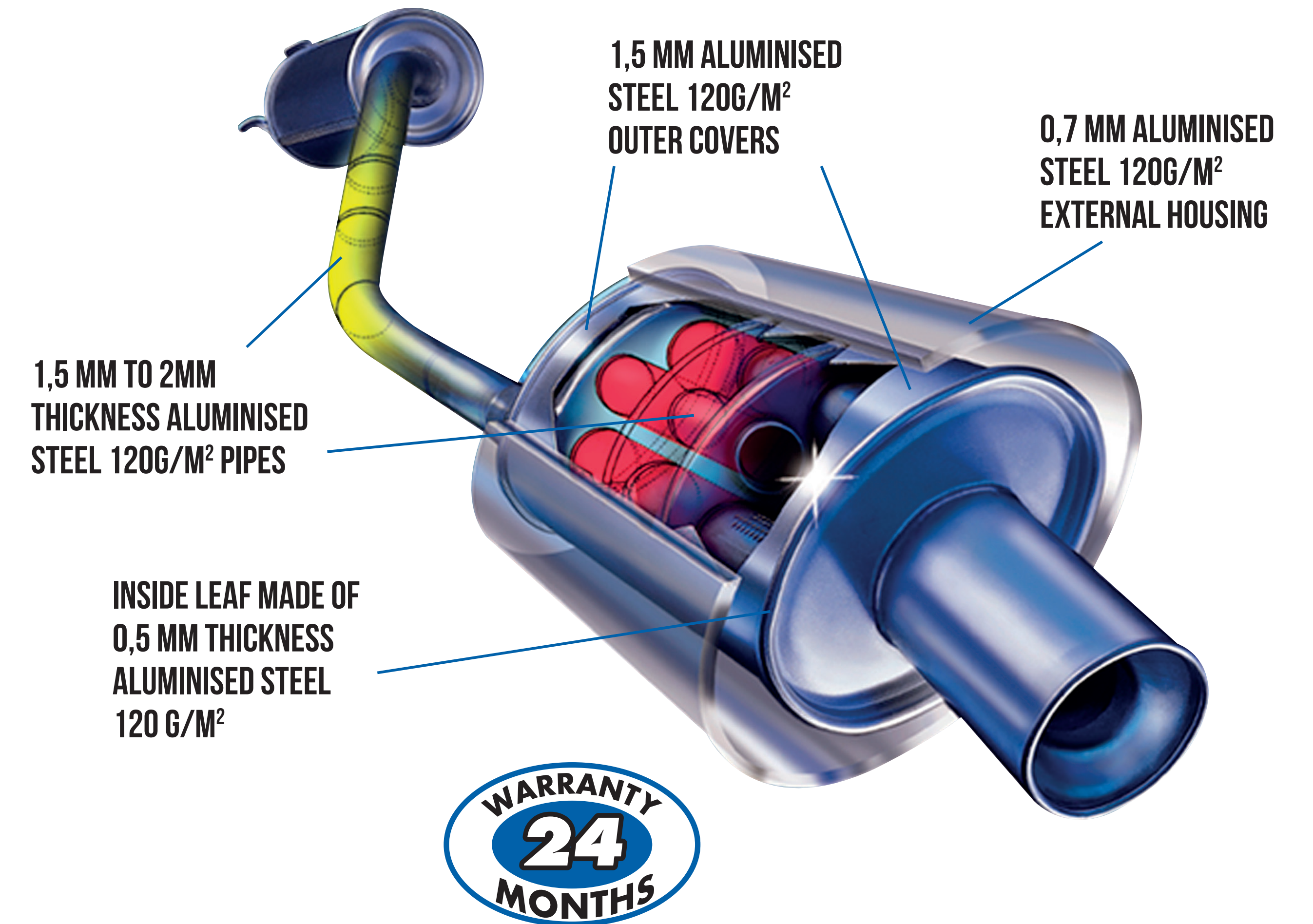


HERMETIC SEAM OF THE HOUSING IS RUSTED: THIS ONLY BECOMES A PROBLEM WHEN IT GENERATES AN AIR LEAKAGE.

PERFORATED EXHAUST HOUSING. THIS FAILURE IS COMMON IN MONO-LAYER SILENCERS DUE TO THE ACCUMULATION OF WATER INSIDE.

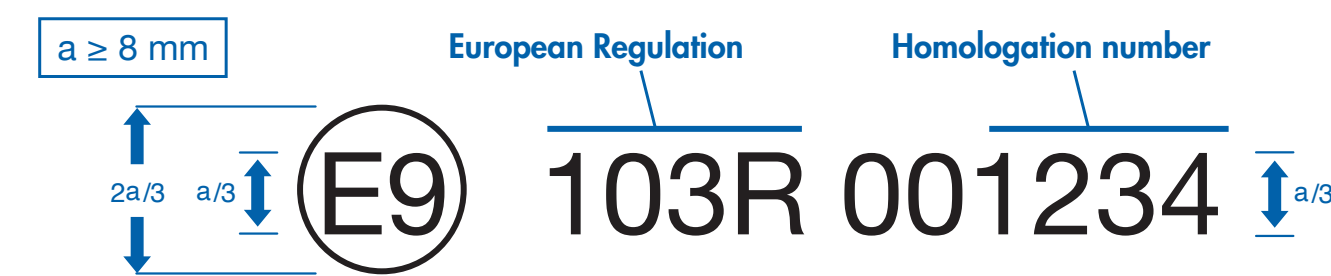
SILENCER HOUSING HAS EXPLODED DUE TO CONDENSATION OF UNBURNED FUEL (HC) INSIDE THE SILENCER.

WALKER® MANUFACTURING QUALITY



EUROPEAN HOMOLOGATION CODES

European Homologation code for Catalytic Converters



European Homologation code for Silencers



Homologation country	Homologation guideline	Homologation number
1 Germany	Guideline 70/157/EEC	N° 00
2 France	Guideline 77/212/EEC	N° 01
3 Italy	Guideline 84/424/EEC	N° 02
4 Netherlands	Guideline 92/97/EEC	N° 03
5 Sweden		
6 Belgium		
7 Spain		
8 UK		
9 Austria		
10 Luxembourg		
11 Finland		
12 Denmark		
13 Portugal		
14 Greece		
15 Ireland		

Examples of incorrect codes on products

